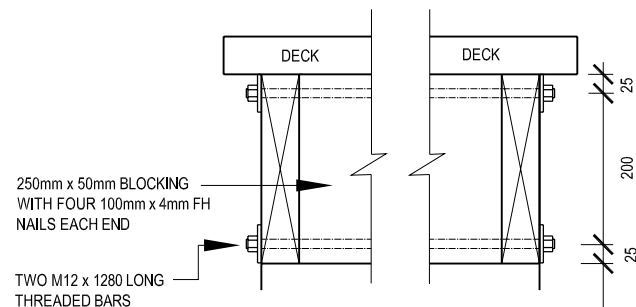
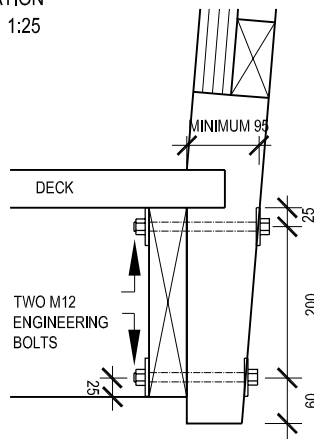


1 STANDARD BOARDWALK DETAIL
ELEVATION
Scale 1:25

POSTS EMBEDDED 900 INTO 300mmØ HOLES IN GOOD FIRM GROUND WITH 20MPa CONCRETE BACKFILL
TWO 150mmØ MINIMUM POSTS AT 1200 SPACING

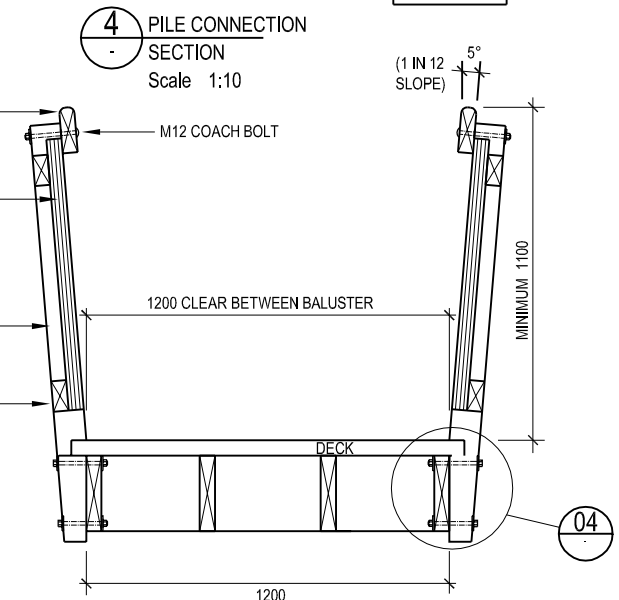


2 BLOCKING DETAIL
SECTION
Scale 1:10



3 BALUSTER FIXING DETAIL
SECTION
Scale 1:10

150mm x 50mm DRESSED HANDRAIL WITH 20mm RADIUS ON UPPER EDGES (SEE SPLICING DETAIL)
50mm x 50mm DRESSED BATTENS WITH MAXIMUM 100mm BETWEEN AND FIXED TO RAILS BY TWO 90mm x 3.75mm FH NAILS TOP AND BOTTOM.
125mm x 125mm DRESSED BALUSTER AT MAXIMUM 900mm CENTRES
100mm x 100mm RAILS FIXED TO BALUSTERS WITH THREE 100mm x 4mm FH NAILS (SKEWED)



4 PILE CONNECTION SECTION
Scale 1:10
5 BRIDGE SECTION
Scale 1:25

NOTES
REFER TO DRAWING 18175-015 FOR CONSTRUCTION NOTES.